



OpenDoors

Supporting Sonoma County, Together.

Partner Toolkit

SONOMA COUNTY HUMAN SERVICES DEPARTMENT

Open Doors Partner Toolkit

**PRESENTED BY SONOMA COUNTY
HUMAN SERVICES DEPARTMENT**

This toolkit is designed to equip you with resources and information on all available services for Sonoma County residents. With this knowledge, you can better support community members—no matter what brought them through the door. Together, we can help improve the quality of life for our community.

As a trusted partner serving vulnerable populations, your role is vital in ensuring residents receive the assistance they need. With your help, we can connect more people to life-changing resources that create lasting impact.

This toolkit includes materials to educate and empower community members to take the first step toward stability:

- 1 Open Doors Campaign Overview
- 2 Campaign Social Media Links
- 3 Printable Service Directory Brochure
- 4 Printable Flyer
- 5 Printable Poster
- 6 Social Media Content
- 7 Email Content for Eblasts or Newsletters



About the Campaign

The Open Door campaign is a collaborative initiative that streamlines access to essential services by organizing them into clear, intuitive categories. This approach not only enhances the user experience for residents but also supports our collective efforts to ensure that every community member can quickly and confidently connect with the resources they need.

HOW IT WORKS

One-Stop Resource Hubs: We are establishing a centralized website where residents can receive information and contact details for key services.

Simplified Access: Through a user-friendly online portal, community members can easily find the programs that fit their needs.

Community Outreach: We're partnering with local organizations, businesses, and service providers to ensure that no one falls through the cracks.

Personalized Support: Our trained navigators are available to assist individuals and families in understanding their options and connecting with the right resources.

Learn more at OpenDoorsSC.com.

Family & Children

Programs that assist families with childcare services, parenting resources and child and youth welfare support to ensure the well-being of children, youth and families.



Victim Services & Violence Prevention

Support for victims of all forms of violence to aid survivors through shelter, counseling, legal aid, and safety planning to help individuals heal and rebuild safely.



Employment & Training

Job training, career development and job search resources designed to support adults and youth in gaining employment and financial stability.



Food Assistance

Food programs like CalFresh and WIC that help individuals and families access nutritious food through EBT cards and local food pantries, distributions, and hot meal services.



Health & Dental

Access to healthcare through programs such as Medi-Cal and Covered California; includes listing of medical and dental providers that accept Medi-Cal and/or provide low cost or sliding scale services.



Aging & Disability

Programs offering in-home care, assisted living resources, meals, transportation, social activities and other resources to support the health, independence and engagement of older adults and people with disabilities.



Mental Health & Substance Use

Services offering support, treatment, and resources to promote mental well-being, and assist those affected by mental health or substance use disorders.



Immigrants

Legal assistance for immigrants, language services and community resources that support immigrants in navigating to residency, citizenship and community integration.



Legal

Free and low-cost legal aid programs providing assistance with civil legal matters including housing disputes, public benefits, immigration and family law issues.



Veterans

Specialized resources for veterans and their families including healthcare, housing assistance, job placement services and benefits guidance.



Housing & Shelter

Emergency shelters, transitional housing, and homeless support services and affordable housing resources designed to help individuals and families move toward stable, more permanent housing.



Disaster Response & Other

Community disaster preparedness, response and recovery information and resources. Additional programs and offerings that fall outside other listed categories, including financial assistance and support resources.



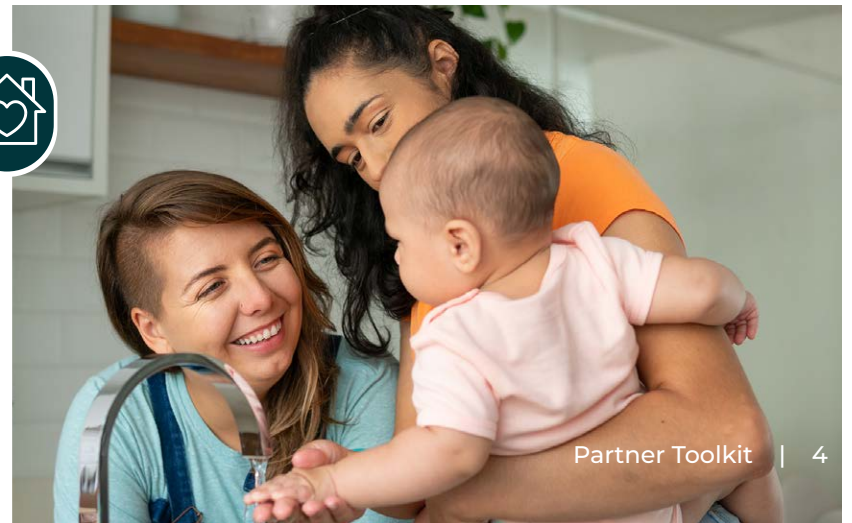
Why It Matters?

Connecting Critical Services Across Sonoma County

SUPPORT STARTS WITH YOU

Accessing essential services shouldn't be difficult. That's why the Open Doors campaign ensures that no matter where community members seek help, they're connected to the resources they need. At any Sonoma County Human Services Department or partner location, a trained team is ready to guide individuals to the right support.

By spreading the word, you help ensure that every Sonoma County resident can access the services they need to live healthier, happier lives—making our community stronger for everyone.



Campaign Social Media Links

To maintain a consistent message and look, use the following information when posting about the campaign on social media. Don't forget to include our hashtags!

CAMPAIGN HASHTAGS

#OpenDoors
#HereToHelp
#SonomaCounty
#SonomaCountyOpenDoors

CAMPAIGN URL	OpenDoorsSC.com
FACEBOOK	/sonomacountyhumanservices
INSTAGRAM	@sonomacountyhumanservices
X (TWITTER)	@countyofsonoma



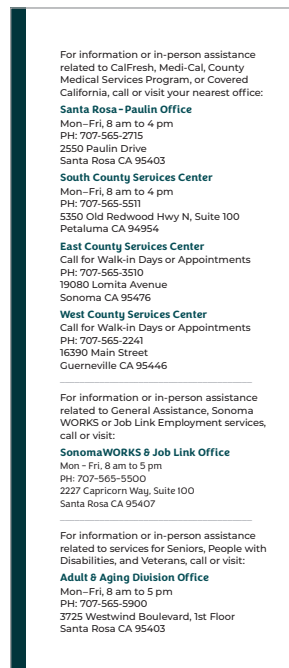
Printable Services Directory Brochure

Use this printable tri-fold brochure to share a selection of providers from each category with community members who may not have access to or be able to use the internet. It's a helpful tool for connecting them to the support services they need.

For assistance by phone, call 2-1-1 or 1-800-325-9643 if outside Sonoma County.



Front



Inside Flap



Center



Back



OpenDoors
Supporting Sonoma County, Together.

OpenDoorsSC.com

Printable Flyer

Download and use the printable flyer to inform community members about the new Open Doors website and the many accessible services listed there that are available through the County of Sonoma and its partners.

We are making it easier for you to find local safety net services in Sonoma County with our new website: **OpenDoorsSC.com**. This user-friendly online guide connects you to local resources for all the categories listed below, making assistance easier to access for everyone. Visit today!

To access the Open Doors website, type the site address in your browser or use your cell phone camera to take a picture of this QR Code and follow the link.



For assistance by
phone, call 2-1-1
or 800-325-9604.



For information or in-person assistance related to CalFresh, Medi-Cal, County Medical Services Program, or Covered California, call or visit your nearest office:

Santa Rosa - Paulin Office

Mon-Fri, 8 am to 4 pm
PH: 707-565-2715
2550 Paulin Drive
Santa Rosa CA 95403

South County Services Center

Mon-Fri, 8 am to 4 pm
PH: 707-565-5511
5350 Old Redwood Hwy N, Suite 100
Petaluma CA 94954

East County Services Center

Call for Walk-in Days or Appointments
PH: 707-565-3510
19080 Lomita Avenue
Sonoma CA 95476

West County Services Center

Call for Walk-in Days or Appointments
PH: 707-565-2241
16390 Main Street
Guerneville CA 95446

For information or in-person assistance related to General Assistance, Sonoma WORKS or Job Link Employment services, call or visit:

SonomaWORKS & Job Link Office

Mon - Fri, 8 am to 5 pm
PH: 707-565-5500
2227 Capricorn Way, Suite 100
Santa Rosa CA 95407

For information or in-person assistance related to services for Seniors, People with Disabilities, and Veterans, call or visit:

Adult & Aging Division Office

Mon-Fri, 8 am to 5 pm
PH: 707-565-5900
3725 Westwind Boulevard, 1st Floor
Santa Rosa CA 95403



Printable Poster

Download and print both the English and Spanish posters. Display them in public areas to inform community members about the new Open Doors website and the many accessible services listed there that are available through the County of Sonoma and its partners.

Available sizes for in-house printing:
8.5 x 11, 11x 17.



OpenDoors
Supporting Sonoma County. Together.
OpenDoorsSC.com

Open Doors, Together We Thrive.

Find local safety net services in Sonoma County at OpenDoorsSC.com. This user-friendly online guide connects you to resources for housing, food, healthcare, immigration, and more, making assistance easier to access for everyone.

Visit today!

How to Get Started

Ask a staff member about these services or explore our digital directory to learn more. Take the first step toward accessing the resources you need today! Use your cell phone camera to take a picture of this QR Code and follow the link.



 <p>Family & Children Programs that assist families with childcare services, parenting resources and child and youth welfare support to ensure the well-being of children, youth and families.</p>	 <p>Housing & Shelter Emergency shelters, transitional housing, homeless support services and affordable housing resources designed to help individuals and families move toward stable, more permanent housing.</p>	 <p>Employment & Training Job training, career development and job search resources designed to support adults and youth in gaining employment and financial stability.</p>	 <p>Food Assistance Food programs like CalFresh and WIC that help individuals and families access nutritious food through EBT cards and local food pantries, distributions, and hot meal services.</p>
 <p>Health & Dental Access to healthcare through programs such as Medi-Cal and Covered California; includes listing of medical and dental providers that accept Medi-Cal and/or provide low cost or sliding scale services.</p>	 <p>Aging & Disability Programs offering in-home care, assisted living resources, meals, transportation, social activities and other resources to support the health, independence and engagement of older adults and people with disabilities.</p>	 <p>Mental Health & Substance Use Services offering support, treatment, and resources to promote mental well-being, and assist those affected by mental health or substance use disorders.</p>	 <p>Immigrants Legal assistance for immigrants, language services and community resources that support immigrants in navigating to residency, citizenship and community integration.</p>
 <p>Legal Free and low-cost legal aid programs providing assistance with civil legal matters including housing disputes, public benefits, immigration and family law issues.</p>	 <p>Veterans Specialized resources for veterans and their families including healthcare, housing assistance, job placement services and benefits guidance.</p>	 <p>Victim Services & Violence Prevention Support for victims of all forms of violence to aid survivors through shelter, counseling, legal aid, and safety planning to help individuals heal and rebuild safely.</p>	 <p>Disaster Response & Other Community disaster preparedness, response and recovery information and resources. Additional programs and offerings that fall outside other listed categories, including financial assistance and support resources.</p>



2-1-1
Get Connected. Get Help.™

For assistance by phone, call 2-1-1 or 800-325-9604

Social Media Content

Help spread the word about these accessible services. Share the posts below on your social media channels to support the Sonoma County Open Doors campaign.

Package includes:

Three graphics (1080 x 1350px)
with suggested post copy.



Getting support is easier than ever.
Reach out today to get connected
with the right services.

Visit the Open Doors website to
explore available resources.

#OpenDoors #HereToHelp
#SonomaCounty
#SonomaCountyOpenDoors



Find the resources you need.
Sonoma County and partners like
us are connecting community
members with essential services.

Visit the Open Doors website to
explore available resources.

#OpenDoors #HereToHelp
#SonomaCounty
#SonomaCountyOpenDoors



Unlock the support you deserve.
We're here to connect you with the
resources you need to move forward.

Visit the Open Doors website to
explore available services.

#OpenDoors #HereToHelp
#SonomaCounty
#SonomaCountyOpenDoors

Email Content

Download and share the email content to help spread the word about the Open Doors campaign and how Sonoma County and its partners are making services more accessible.



Package includes:

- 1) Email header graphic (1200 x 800px)
- 2) Sample email letter (set up in a Word doc).

HELPING OUR COMMUNITY ACCESS THE SUPPORT THEY NEED

Everyone deserves access to essential services. Help connect those in need to housing, food, healthcare, and more.

At **[Partner Organization Name]**, we are committed to ensuring that everyone in our community has access to the support they need to thrive. If you or someone you know is facing financial hardships, health challenges, or other difficulties, help is available.

Sonoma County, along with its community partners, offers a wide range of essential services—from housing and food assistance to mental health support and job resources. No matter where someone begins their search for help, they will be guided to the right programs.

Connecting You to Essential Services

Community members can access a wide range of essential services, including:

- Housing Assistance
- Food & Nutrition Support
- Healthcare & Mental Health Services
- Employment & Financial Assistance
- Long-Term Care & Disability Services
- Cash Aid
- Dental Care
- Family & Children Support
- Emergency Shelters
- Immigration Services
- Legal Services
- Senior Services
- Substance Use Treatment & Support
- Veteran Support

We encourage you to share this information with those who may need it. Whether you're looking for support yourself or know someone who could benefit, we're here to help.

Get Connected Today

Reach out or visit OpenDoorsSC.com for a full list of services.

Together, we can ensure that no one in our community has to navigate these challenges alone.

Best,

[Your Name] [Your Organization]

[Your Contact Information]



OpenDoors

Supporting Sonoma County, Together.

OpenDoorsSC.com

Contact Information

For more information regarding the Open Doors campaign or to report incorrect information, links or phone numbers, please email us at the address below.

**SONOMA COUNTY
HUMAN SERVICES DEPARTMENT**

OpenDoors@schsd.org

PRODUCED BY
UPTOWN
STUDIOS